

PLAIN CITY

LOTS 9, 62, 63, 70, & 71, PLAT B

TAXING UNIT: 21

SCALE 1" = 100'

SEE PAGE 59

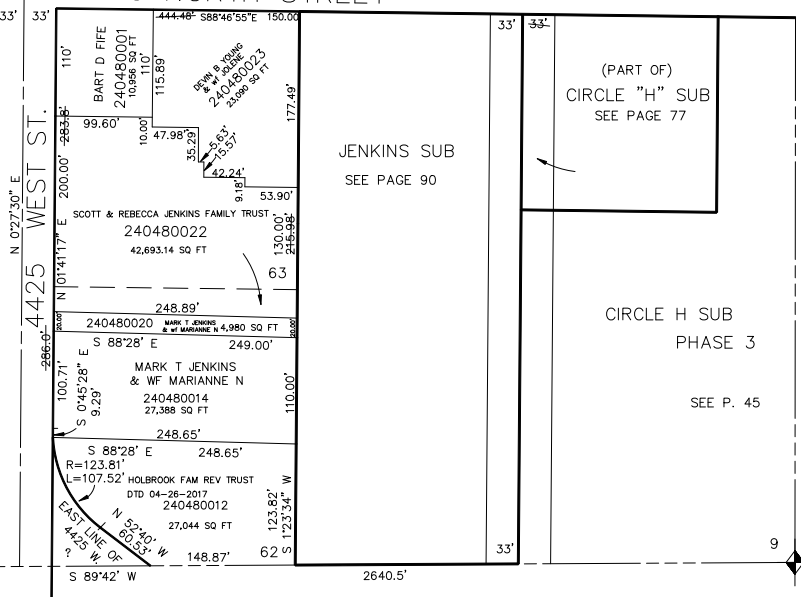
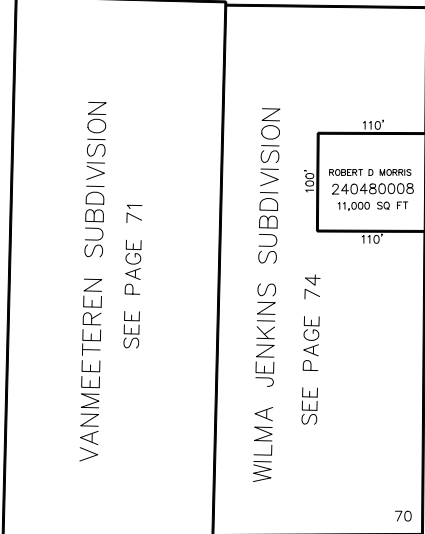
SEE PAGE 49

CO. MT. #37

1975 NORTH STREET

SEE BOOK 19 PAGE 32

4500 WEST ST. N 0°27'30" E



SEE PAGE 47

SEE BOOK 15, PAGE 15